

WELCOME TO WORSHIP!



*And he went throughout
Galilee, proclaiming
the message...*

MARK 1:39, NRSV

MYSTERY REVEALED:
CHRIST REVEALS HIS POWER OVER THE EFFECTS OF SIN
The Fourth Sunday after Epiphany

January 31, 2021

WELCOME TO WORSHIP

If you are a visitor to our church, we extend you a warm welcome. For worshippers joining us in person, we are happy you are here. If you have any questions, just ask an usher or other volunteer.

If you are worshipping online, we would love to see just what kind of impact our worship services are making. Please fill out our online Connect Card to let us know where you're worshipping from and how we might continue to serve you. You can find a link at www.stpaulswr.org/watch. You can also contact us with any questions or prayer requests via email or phone (churchoffice@stpaulswr.org or 715-421-3634).

SPECIAL GUIDELINES DURING THE PANDEMIC

- † **Please practice social distancing whenever possible.** Keep close personal interactions to a minimum, especially when inside the building. Please feel free to worship from the Welcome Center, if you feel uncomfortable with the number of people in the sanctuary.
- † **Please practice good hygiene.** Masks, hand sanitizer, and kleenex are available in the Welcome Center. Our restrooms are located along the hallway on the west side of the worship space.
- † **Large print service folders, hearing devices, and printouts of the Bible readings and hymns** are available on the Information Booth in the Welcome Center, if you need them.
- † **Your offering and connect card** can be placed in the slots on the top of the Information Booth in the Welcome Center. If you have a smartphone, you can fill out the online connect card. Empty offering plates will be brought forward and placed on the altar to symbolize our sacrifice to God.
- † **Children's bulletins** can be picked up at the Information Booth in the Welcome Center. If your children become fussy, you can quiet them in the Welcome Center. The Children's Message will still take place. However, the children will not be invited forward. Please keep them with you in your pew.

† **Please wait for the ushers to dismiss you.** Following post-service announcements, pastor(s) will leave down the side aisles and head outside to greet you. Ushers will dismiss worshipers from the back moving forward; and down the center aisle, as well as the side aisles. This is to minimize personal contact. Please take this service folder with you and dispose of it properly.

SERVICE NOTES FOR THIS SUNDAY



It's no secret this life is filled with hardship. We can easily become weary as we face difficulty after difficulty. Jesus reveals himself today, however, to show that he is stronger than our strength; he is more powerful than the effects of sin that plague us. Let us join in heart and voice to praise our Savior who shows his power over all things through his promises and his works in all three readings today.

The liturgical color¹ for this Sunday is green, a color of growth and life, highlights the growth and strengthening of our faith when our God delivers us from dangers, troubles, and hardships.

COPYRIGHT INFORMATION

The Holy Bible, Evangelical Heritage Version® (EHV®) copyright © 2018 The Wartburg Project. All rights reserved. Used by permission: www.wartburgproject.org

Morning Praise. Words and Music: *Christian Worship: A Lutheran Hymnal*. © 1993 Northwestern Publishing House. All rights reserved. Reprinted under OneLicense.net A-719903

760 "When Peace Like a River." Text & Tune: public domain.

"We Believe." by Richie Fike, Matthew Hooper, Travis Ryan © 2013 Integrity Worship Music, Integrity's Praise! Music, Life Worship, Travis Ryan Music admin by CapitolCMGPublishing.com excluding the UK & Europe which is admin by Integrity Music, part of the David C Cook family, songs@integritymusic.com. Used by permission. CCLI#143045

¹ The liturgical color is found on the pastor's stole, the pulpit, and the altar.

MORNING PRAISE

Morning Praise is based on the historic service called Matins. Joined to Christ, our Risen Lord, we glorify God as we rise to the activities of this new day.

WELCOME


OPENING HYMN

Oh, Bless the Lord, My Soul | CW 238
Verse 1-All; 2-Men; 3-Women; 4-Pastors; 5-All

Please stand.


OPENING SENTENCES *(sung)*

| CW p. 45

M:  O Lord, open my lips.



C: And my mouth shall de - clare your praise.

M:  Hasten to save me, O God.



C: O Lord, come quick - ly to help me.

M:  The glory of Christ is revealed: Let us worship him.

OH, COME; LET US SING TO THE LORD

| CW p.46

The long notes with multiple words under them indicate chanting, or singing all of those words on that one note. It can be difficult to settle on a unified pace for these songs, so please follow the pace of the song leaders.



C: Oh, come, let us sing to the Lord, let us make a joyful noise to the rock of



our sal - va - tion. Let us come into his presence with thanks-giv - ing,



let us make a joyful noise to him with songs of praise. For the Lord is a



great God and a great king a-bove all gods. The deep places of the earth are



in his hand; the heights of the hills are al - so his. The sea is his, for he



made it, and his hand formed the dry land. Oh, come, let us worship and



bow down, let us kneel before the Lord our mak - er. For he is our God,



and we are the people of his pasture and the sheep of his hand.

10:30 - INSTALLATION OF OFFICERS

PRAYER OF THE DAY

M: Let us pray.

Heavenly Father, keep your family continually in the true faith, so that those who rely only on the hope of your heavenly grace may be protected by your mighty power; through Jesus Christ, your Son, our Lord, who lives and reigns with you and the Holy Spirit, one God, now and forever.

C: **Amen.**

Please be seated.

The Word

In this section of each service, we find the basic structure of “speak—sing—speak—sing...” This rhythm of worship was already in place in the days of the Old Testament. What a way to show the unity of the Church across the ages!

FIRST LESSON - Isaiah 40:27-31

The LORD gives strength to the weak.

After the reading, the announcement is made:

M: The Word of the Lord.

C: **Thanks be to God!**

PSALM OF THE DAY

*Psalms 103 | CW p. 105
Choir sings verses; All sing refrain*

SECOND LESSON

1 Peter 5:6-11

The God of grace supports us by the power of the gospel.

After the reading, the announcement is made:

M: The Word of the Lord.

C: **Thanks be to God!**

SONG BY SCHOOL CHILDREN

Jesus Loves Me

Please stand.

GOSPEL

Mark 1:29-39

Jesus has power over demons and disease.

After the Gospel, the announcement is made:

M: This is the Gospel of the Lord.

C: **Praise be to you, O Christ!**

Be seated.

CHILDREN'S MESSAGE

For the time being, please keep children with you in the pews for the Children's Message.

HYMN

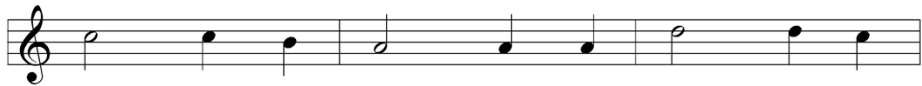
When Peace Like a River | CWs 760
 Please join to sing starting with the second refrain.



1 When peace like a riv - er at - tend - eth my
 2 My sin— oh, the bliss of this glo - ri - ous
 3 And, Lord, haste the day when my faith shall be



way, When sor - rows like sea bil - lows roll— What -
 thought— My sin, not in part, but the whole, Is
 sight, The clouds be rolled back as a scroll; The



ev - er my lot, thou hast taught me to
 nailed to the cross, and I bear it no
 trump shall re - sound, and the Lord shall de -



say, It is well, it is well with my soul.
 more: Praise the Lord, praise the Lord, O my soul!
 scend; E - ven so, it is well with my soul.



Refrain It is well with my
 It is well with my soul.



soul.
 It is well, it is well with my soul.

SERMON

Jesus Brings Deliverance

CREED

We Believe
All sing the chorus/refrain

Choir - In this time of desperation
when all we know is doubt and fear,
there is only one foundation.
We believe, we believe.

Choir - In this broken generation,
when all is dark, You help us see.
There is only one salvation.
We believe, we believe.

The verses of this song touch on the same points as our readings: life is difficult, but we have a wonderful and glorious God in whom to believe, especially in those times of desperation.

All: 
We be - lieve__ in God, the Fa - ther, we be - lieve__ in Je - sus Christ. We be - lieve


__ in the Ho - ly Spir - it, __ and He's giv - en us __ new life. We be - lieve


__ in the Cru - ci - fix - ion we be - lieve__ that He con - quered death. We be - lieve


__ in the Res - ur - ec - tion, and He's com - ing back a - gain.

Choir - We believe.
So, let our faith be more than anthems,
greater than the songs we sing.
And in our weakness and temptations,
we believe, we believe.

**All - We believe in God the Father, We believe in Jesus Christ.
We believe in the Holy Spirit, and He's given us new life.
We believe in the crucifixion, we believe that He conquered death.
We believe in the resurrection, and He's coming back again.**

Choir - Let the lost be found, let the dead be raised.
In the here and now let love invade.
Let the Church live loud. Our God will say we believe, we believe.
And the gates of hell will not prevail,
for the pow'r of God has torn the veil.
Now, we know Your love will never fail. We believe, we believe.

**All - We believe in God the Father, We believe in Jesus Christ.
We believe in the Holy Spirit, and He's given us new life.
We believe in the crucifixion, we believe that He conquered death.
We believe in the resurrection, and He's coming back again.**

Choir - He's coming back again. He's coming back again.
We believe, we believe.

Be seated.

THANK OFFERING

St. Paul's members offer their first and their best to their Savior in order to support the sharing of the Gospel through our church and our worldwide church body, the WELS. Our guests do not need to feel obligated to participate. We ask that everyone, guests and members, sign the Friendship Register which will be passed out during the offering.

If the gospel message has moved you to give and you would like an electronic option, you can scan this QR code with your mobile phone. It will connect you with our website's giving page.



MUSICAL OFFERING

Please stand.

PRAYER OF THE CHURCH

THE LORD'S PRAYER

Our Father in heaven, hallowed be your name, your kingdom come, your will be done on earth as in heaven. Give us today our daily bread; forgive us our sins, as we forgive those who sin against us; lead us not into temptation, but deliver us from evil. For the kingdom, the power, and the glory are yours now and forever. Amen.

Please be seated.

8:00 - INSTALLATION OF OFFICERS

HYMN

Why Should Cross and Trial Grieve Me | CW 428
1, Men; 2, Women; 3, Pastors; 4, All

Please stand.

PRAYER FOR GRACE

M: O Lord, our heavenly Father, almighty and everlasting God, you have brought us safely to this new day. Defend us with your mighty power, and grant that this day we neither fall into sin nor run into any kind of danger; and in all we do, direct us to what is right in your sight, through Jesus Christ, your Son, our Lord.

C: Amen.


Notice the overall beauty of this prayer; we could use it every day to ask for God's protection and direction, which he graciously grants us. For that reason, perhaps it is worth memorizing!

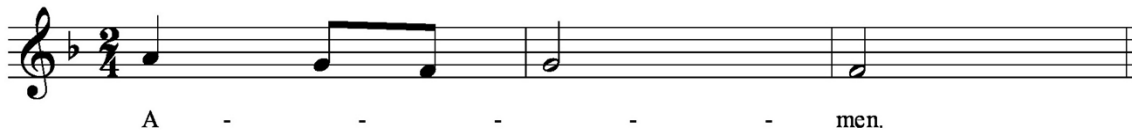
M: ♪ Let us praise the Lord.

CW p.51

The musical notation is on a single staff with a treble clef, a key signature of one flat (Bb), and a time signature of 2/4. The melody consists of four notes: a quarter note G4, a quarter note A4, a half note Bb4, and a quarter note G4. The lyrics 'C: Thanks be to God' are written below the staff, with 'C:' under the first note, 'Thanks' under the second, 'be' under the third, and 'to God' under the fourth.

BLESSING

M:  The grace of our Lord Jesus Christ
And the love of God
And the fellowship of the Holy Spirit be with you all.



Please be seated.

CLOSING HYMN

What God Ordains Is Always Good | CW 429

Verse 1-All; 2-Men; 3-Women; 4-Pastors; 5-All

*As did all of our hymns today,
this hymn speaks to God's
control and protection
throughout our lives. We have
nothing to fear because God will
never leave us nor forsake us!*



TAKE HOME QUESTIONS

1. From these verses of Isaiah 40 what differences do you notice between worldly strength and strength from God? In what ways do you see those differences hold true today?
2. All of 1 Peter, these verses included, encourage Christians during suffering. How can a Christian have a completely different attitude toward suffering than an unbeliever?
3. Reread Mark 1:29-39 (especially verse 38) and formulate a mission statement for Jesus' ministry. What was his primary focus? How does that impact our priorities in life?
4. We get a glimpse of Jesus' prayer life and routine in Mark 1:35. What was his pattern? How can you imitate that pattern in your life?

NEWS & ANNOUNCEMENTS



THIS SUNDAY'S BIBLE STUDY

End Times: The Present Life in Light of Jesus' Future Coming

Join us in the cafeteria from 9:15 to 10:15 AM

For the google meet link, contact a pastor.

NEW SUNDAY STUDY NEXT WEEK

Feb. 7 | 9:15-10:15 AM

Next week, we will start a bible study called The Theology of the Cross. This study is based on a book by Daniel Deuschlander. The book is not required for the class. However, if you want to purchase one, there is the possibility of receiving a discounted price from Northwestern Publishing House if we order as a group. There is a signup sheet on the Ministry Table in the Welcome Center. You can also contact Kent Schroeder (knks@wctc.net or 715-421-4202) to let him know you want a copy.

LAST DAY TO ORDER

Jan. 25 - Feb. 7

This Sunday is the last day to order from the school's virtual Scholastic Book Fair. Every dollar you spend will benefit our school directly. The link to our Book Fair homepage is www.scholastic.com/bf/StPaulsEvangelicalLutheran5.

PICK UP A PIE (OR JAM) TODAY

Willing Workers has homemade apple pies and jam for sale in the Welcome Center this Sunday. The pies are frozen. Just pop one in the oven and bake for 90 minutes for a warm tasty treat. Your purchases help fund special projects around the church and school.

ADULT VOLLEYBALL STARTS TODAY

Sundays | 2:00-5:00 PM

If the colder weather is keeping you less active than you would like to be, come on Sunday afternoons for some friendly competition in the gym. Bring your spouse or bring a friend. The group will meet every Sunday until the weather warms up, so come when you can.

HYGIENE DRIVE IN FEBRUARY

Feb. 14 - Mar. 7

The "Help for the Homeless Hygiene Drive" begins on Feb. 14. Please consider donating personal hygiene and household cleaning products to local charities. Look for the donation box in the Welcome Center soon.

PPP LOAN FORGIVEN

Last year, our church applied for and received a loan through the Paycheck Protection Program (PPP). This loan allowed us to continue to pay our workers in the early days of the pandemic. As a church we do not pay into the unemployment insurance program, but with the PPP loan we were able to continue paying workers who were laid off or had their hours reduced because of the governor's Safer-at-Home Order. Earlier this week, we received news that our PPP loan was forgiven, that is, we don't have to pay it back. What a blessing from God. A big thank you to our treasurer, Kevin Meister, who spent many hours working on the paperwork required for this loan.

15 DAYS OF PRAYER FOR CHINA

Feb. 12-26

Beginning on February 12, China's New Year and Spring Festival celebration will take place. These 15 days mark the most significant of China's holidays. Join thousands of others in praying for Chinese Christians and the gospel's spread in China during these 15 days. A prayer guide is available at 316Now.org/15-days-of-prayer, or pick one up from the Ministry Table in the Welcome Center.

EVERY MARRIAGE NEEDS A LITTLE MAINTENANCE

Maintaining your vehicle will keep it running for a long time. These "Marriage Maintenance" bible studies can help you deal with common issues that cause marital wear and tear, and avoid breakdowns in love, communication, kindness, and patience. Each study is introduced with a short lead-in video that sets up the topic followed by an activity to put it into practice. Simply access the online content in the privacy of your own home and work through it as a couple at a time that is most convenient for you. You can find the materials at welscongregationalservices.net/marriage-maintenance.

SUMMER CAMP IS ON!

Camp Phillip in Wautoma will be running its usual summer camps at reduced capacity. Week-long and half-week camps are available for children in kindergarten through 8th grade. Older children have the option of taking specialty camps on art, archery, horseback riding, and more. Camps run from mid-June through mid-August. Registration begins at noon on February 1. With limited capacity, camps will fill quickly. For more information, visit www.campphillip.com.

CALENDAR

January 31- February 7

SUNDAY	8:00 AM	Worship - Installation of Leaders
	9:15 AM	Bible Study in the cafeteria
	9:15 AM	Catechism Class in the Resource Center
	10:30 AM	Worship - Installation of Leaders
	2:00 PM	Adult Co-ed Volleyball
MONDAY	11:00 AM	Worship for at-risk individuals
TUESDAY	6:45 AM	Men's Bible Study at From the Ground Up Coffee Shop
	9:45 AM	Women Walking in the Word in the Resource Center
	4:30 PM	Choir Practice in the balcony
	6:30 PM	Unified Board Meetings
WEDNESDAY	8:55 AM	Chapel Service
	5:30 PM	Handbells in the balcony
	6:30 PM	Bible Book Group in the Resource Center
THURSDAY	7:00 AM	Men's Small Group at From the Ground Up Coffee Shop
	6:00 PM	Men's Devotional Basketball in the gym
	6:30 PM	Foundations of the Christian Faith in the Resource Center
SUNDAY	8:00 AM	Worship
	9:15 AM	Bible Study in the cafeteria
	9:15 AM	Catechism Class in the Resource Center
	10:30 AM	Worship
	2:00 PM	Adult Co-ed Volleyball

ATTENDANCE & OFFERING REPORT

Last Week's Attendance: 109

From July 1, 2020 to January 22, 2021

Actual ministry income: \$564,780

Actual cost of ministry: \$583,355

Mortgage balance: \$1,305,818



Cast all your anxiety
on him, because
HE CARES FOR YOU.

- 1 Peter 5:7



www.stpaulswr.org

311 14th Ave S | Wisconsin Rapids, WI 54495 | 715-421-3634 | churchoffice@stpaulswr.org

Pastor Lucas Proeber | 989-780-3184 | pastorproeber@stpaulswr.org

Pastor Peter Plagenz | 920-689-3036 | pastorplagenz@stpaulswr.org